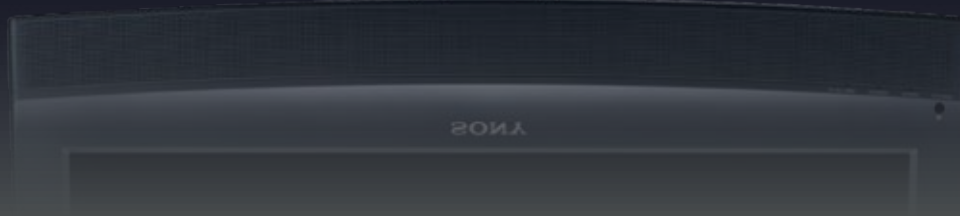
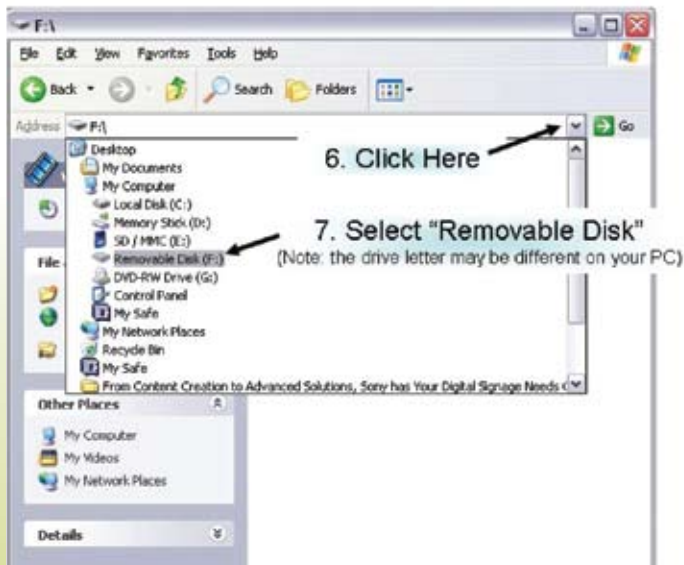
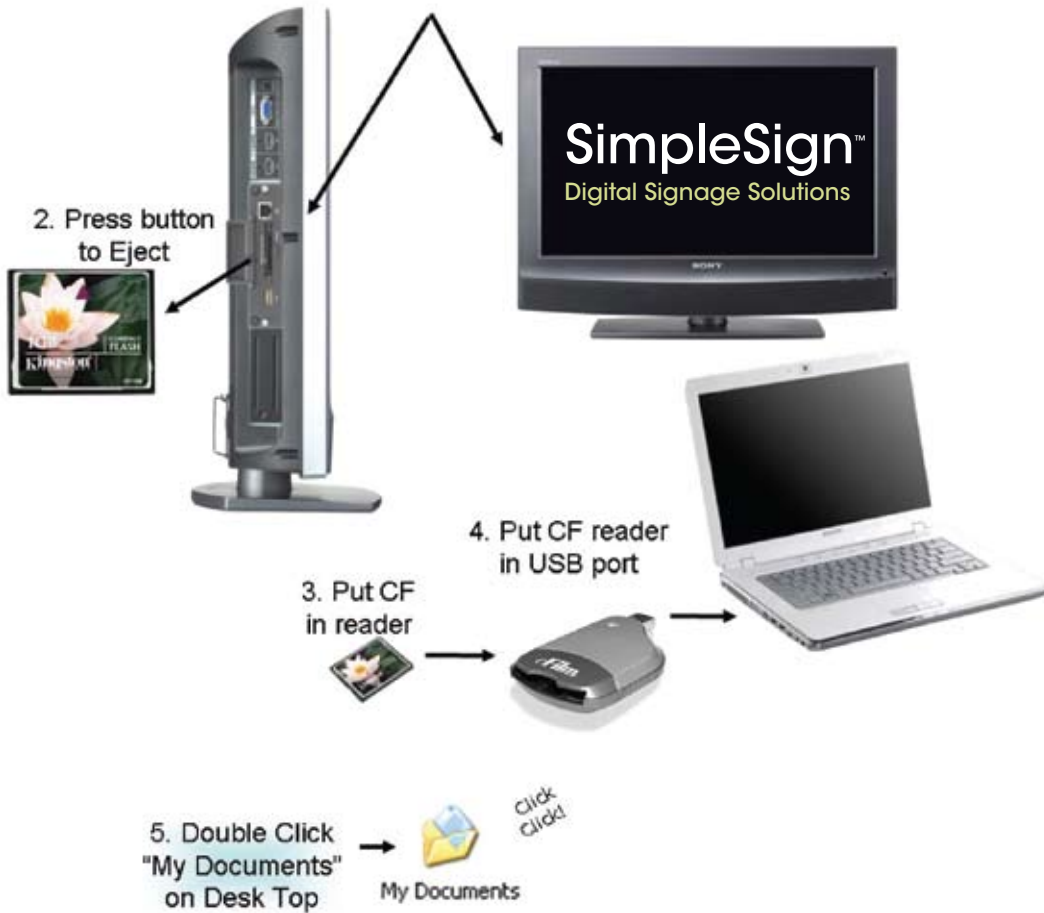


SONY

Quick Start Guide



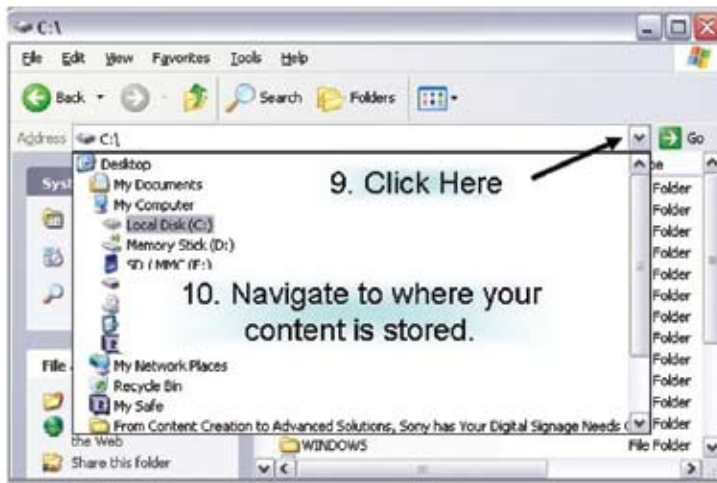
1. Find Compact Flash (CF) card located on left side of the SimpleSign



RESULT:



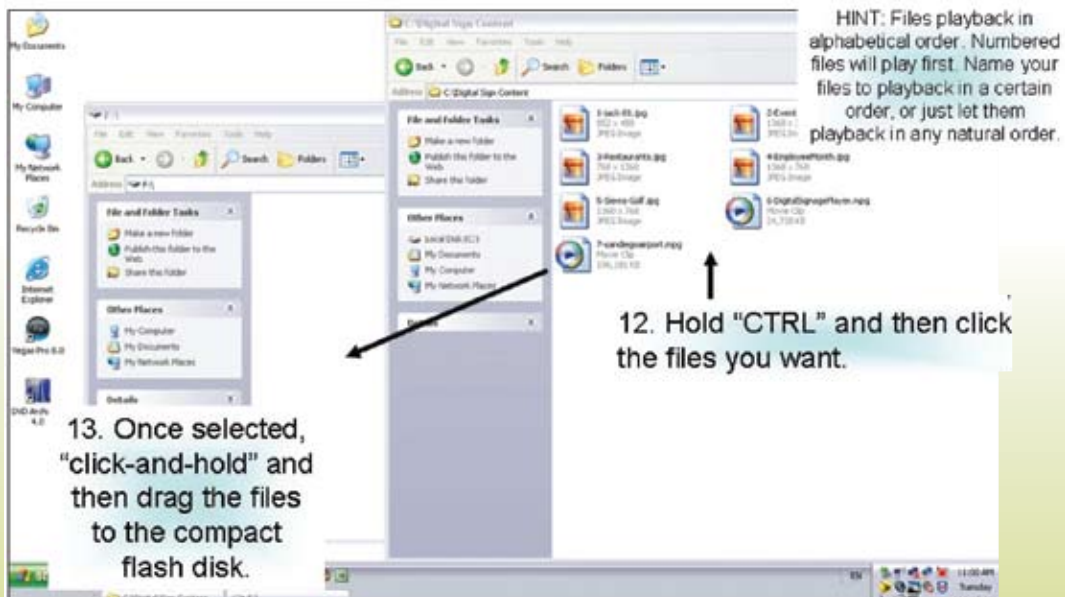
8. Double Click
"My Documents"
on Desk Top Again



RESULT:



11. Position both windows so you can see them at the same time.



15. Turn Power on to start playback.
If the SimpleSign is on, cycle power to start

14. Insert CF card



Still need help? Call the POSC:

► call: **(800) 883-6817**

As a Sony SimpleSign customer you already have VEGAS 8 content creation software, a great tool for creating content. However if you need content, contact Sony:

🔌 click: sonydigitalsignage@am.sony.com

The BKM-FW50 digital signage player, which is the heart of your new SimpleSign, is a very powerful device with capabilities far beyond simple compact flash card playback. To learn more about this, please refer to the enclosed "BKM-FW50 Streaming Receiver Adapter Advanced Guide to Operation".

🔌 click: sony.com/digitalsignage