

HDCAM-SR Workflow Guide

FilmLight

Baselight

Baselight systems provide unparalleled color grading performance and functionality for broadcast and commercials post-production. Baselight supports non-linear workflows with file-based images from disk and servers, as well as traditional workflows that source and conform images from video tape. Baselight video-based workflows have been enhanced with extended support for the HDCAM-SR™ VTRs. This support enables the following workflow changes.

- The capture of 4:2:2 material from the HDCAM-SR VTR can now be achieved at 2x real-time using dual-link HD-SDI video transfer for faster digitizing.
- For stereo 3D productions, left and right channel image streams can be captured and stored in a single pass in real-time using dual-link HD-SDI video transfer. Similarly for layoff and storage of graded stereo 3D material, Baselight can output to the HDCAM-SR VTR in real-time.
- Baselight can also exchange media with the HDCAM-SR VTR using network data transfer, and can browse HDCAM-SR video tapes over a standard network interface to check footage or build lists for ingest.
- Images can be read over the same network interface and stored as DPX frame sequences directly on the Baselight system, without the need for a video connection. Similarly a DPX sequence from Baselight can be written directly to an HDCAM-SR tape as video images over a network connection.
- Baselight also takes advantage of the HDCAM-SR data mode to allow a full project archive to be written to a persistent tape medium over a network connection. In data mode, images and metadata are stored in a lossless format to produce a re-locatable project archive for interchange between systems/facilities and for long-term backup purposes. The Baselight archive transfer takes place over a standard 1GB Ethernet connection.

Baselight 4.3

Supported Workflow

**Double-speed transfer
Stereoscopic 3D**

DATA mode (Project archive)

Applicable HDCAM-SR VTR

**SRW-5800 with HKSR-5803HQ
SRW-5100 with HKSR-5103**

SRW-5800 with HKSR-5803HQ/5804

Baselight/HDCAM-SR specific features

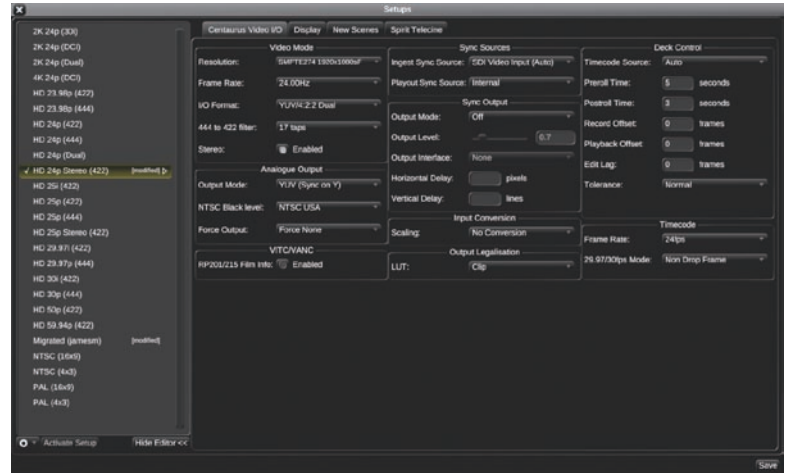
- Double-speed ingest to Baselight: dual-link HD 4:2:2.
- Stereo 3D ingest and payout from Baselight: dual-link HD 4:2:2.
- Network browse, read and write of DPX sequences: 1GB Ethernet.
- Baselight project archive and restore to HDCAM-SR data tape: 1GB Ethernet.



To perform a stereo ingest from tape:

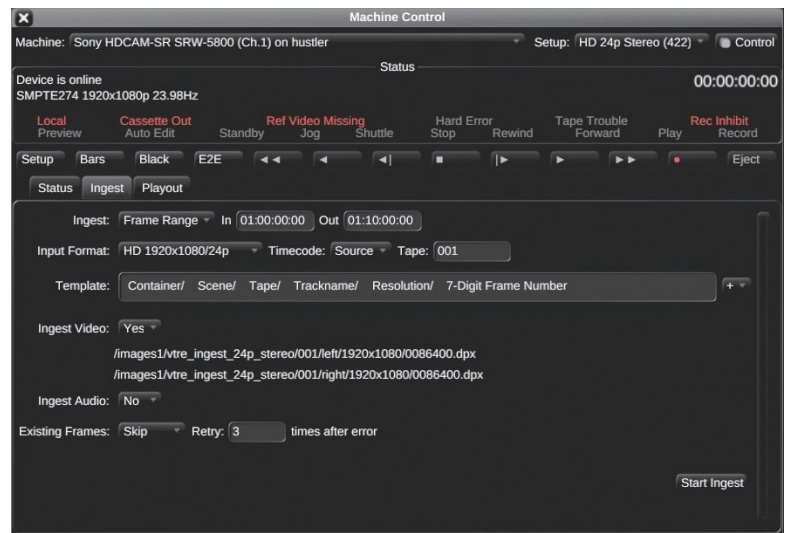
1. Create a Baselight Setup for stereo video I/O. To do this:

- Open the Baselight Setups editor.
- Select an existing video setup and duplicate it.
- Click 'Show Editor' >> and make sure that the 'Centaurus Video I/O' tab is selected.
- In the 'Video Mode' section, select 'YUV4:2:2 Dual' from the 'I/O Format' list.
- Enable the 'Stereo' tick box.
- Click 'Save' and exit the Setups editor.



2. Set up the stereo ingest in the Machine Control View. To do this:

- Open the Machine Control View.
- Select the appropriate tape deck from the 'Machine' list.
- Select the new stereo video I/O setup (created in the previous step) from the 'Setup' list.
- Select the 'Ingest' tab and select 'Frame Range' from the 'Ingest' list.
- Add a 'Trackname' element to the ingest template by selecting 'Trackname' from the + list to the right of the 'Template' field.
- Set 'Ingest Video' to 'Yes'.
The Machine Control View displays the two paths in which the captured frames will be stored.
- To start the ingest, click 'Start Ingest'.



Contact

FilmLight

14-15 Manette St
London, W1D 4AP
UNITED KINGDOM

Phone +44 (0)20 7292 0400

Fax +44 (0)20 7292 0401

Website www.filmlight.ltd.uk

e-mail info@filmlight.ltd.uk