

SONY
make.believe

Light, portable, easy to use and
packed with professional power



Sony's HXR-MC2000U shoulder camcorder is loaded with features, yet easy to use.



AVCHD

MPEG2 SD



Exmor R
CMOS Sensor





Fully loaded for the serious videographer, yet simple enough for a beginner to use

Advanced technology is now available in a small, easy-to-operate package. Sony's HXR-MC2000U digital HD video camcorder combines extraordinary picture quality with amazing ease of operation. Its finely calibrated auto-settings let you focus on the action, not the camera.

But don't let the simplicity fool you - this is a serious camcorder that offers the features that professionals rely on. Like Sony's EXMOR R™ CMOS sensor for superior picture quality. What's more, the HXR-MC2000U is a tapeless front-end solution for video acquisition that works with most non-linear editing systems.

Add lightness, compact size, and affordability to the mix of features and ease of use, and you've got a camcorder that hits the mark in any shooting situation. Whether you're teaching video production students, making a documentary, or shooting a corporate event or wedding, the Sony HXR-MC2000U is the ideal shoulder-mount camcorder for your shooting and recording needs.

Versatile enough for any shooting situation, yet sensitive enough to record in candlelight.

Sony G Lens for Wide Angle Shooting. Sony's unique optical design technology and quality control are the heart and soul of the HXR-MC2000U's sophisticated G™ Lens, delivering exceptional performance on par with some of the best lenses in the industry. The camcorder perfectly complements the G Lens with an advanced image sensor and Sony's famous image processing technology. Such fine calibration is bound to improve your shooting in all situations, from zooming in for the close-ups, to the 29.8 mm wide angle view in video mode (35mm equivalent).



40mm Conventional Lens

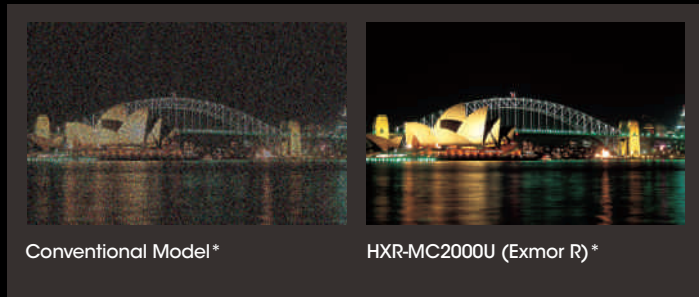


29.8mm Sony G Lens (HXR-MC2000U)

* Simulated images

** 1 GB = 1 billion bytes, a portion of which is used for data management functions.

Sony Exclusive Exmor R CMOS-Sensor with ClearVid™ Array and BIONZ™ Image Processor. The HXR-MC2000U's Exmor R CMOS sensor is capable of producing superb image quality, whether in bright daylight, dimly lit interior scenes, or outdoor night scenes. Featuring Sony's independently developed back-illuminated structure, it effectively doubles the sensitivity of conventional CMOS sensors and provides a dramatic boost in low-light performance. Sony's unique BIONZ image processor takes it even farther, processing the precise visual information to maintain reality, texture, and depth at the settings and styles you select. BIONZ technology faithfully reproduces the scenes or applies effects and visual techniques, depending on your wishes. And all at lightning speed while suppressing noise.



SteadyShot® image stabilization with Active Mode. This new feature ensures smooth movement wherever you're shooting. In addition, Sony's innovative 3-Way Shake-Cancelling technology adds electronic roll stability for even smoother video capture. This latest version of image stabilization technology ensures images that are up to 10 times steadier for wide angle shooting than conventional Optical Steady Shot® images. When you zoom in, an intelligent digital image stabilizer starts to blend in and work together with its optical counterpart to effectively reduce camera shake. This technology is also able to reduce the natural swaying motion that occurs from walking.



Long Operating Time with infoLITHIUM-L® Series Battery and Internal Memory. The camcorder uses standard infoLITHIUM-L series batteries. CMOS imager and DSP technology result in low power consumption for cool running with the camcorder's standard infoLITHIUM L series batteries, compatible with many types of Sony professional camcorders and accessories. With the largest capacity battery NP-F970, you'll have a maximum operating time of approximately 13 hours for AVCHD recording in FH mode. In conjunction with the 64GB built-in memory, this camcorder allows more than six hours of continuous recording at the highest AVCHD quality at 24Mbps.

Record to Cards or Built-in Memory. You have two reliable ways to record with the HXR-MC2000U: onto affordable consumer memory cards or into the camcorder's large capacity 64GB** solid-state memory. This combination of removable and built-in memory is especially convenient when shooting a documentary or news report on the move. When data has been backed up to an HDD or downloaded to a PC for editing, you can simply reuse both removable memory cards and internal memory for your next assignment.

- ▶ **COMPATIBLE MEMORY CARDS:** For detailed information please refer to the specification sheet at the back of this brochure.
- ▶ **INTERNAL MEMORY: 64-GB**

Manual and Auto Control Options. Using the assignable lens ring, you can manually adjust key features like Focus, White Balance, Exposure, AE Shift, Iris priority, and Shutter Speed priority. You can also control the G Lens iris to create an out-of-focus effect in the foreground or background and adjust the shutter speed to create special effects, such as the flowing motion of a waterfall or bird wings in flight. Or use the Intelligent Auto Scene Selection function for simple set-up in adverse lighting or other challenging shooting conditions, such as bright fireworks or sunsets.

Powerful Time-Saving Workflow Solutions. When the camcorder is connected to the optional DVDirect® Express (VRD-P1) DVD writer via a USB cable, you only need to press the One Touch Disk button to burn video footage directly onto a DVD—without using a PC. This model is also equipped with a down-conversion function that enables DVD burning to SD picture quality. Then play back a DVD you just made by pressing the Play button on the DVDirect Express when the camcorder is connected. With Direct Copy you also have the option of quickly and easily backing up valuable video data on an external hard disk drive, HDD – without using a PC. And to find and organize images quickly and efficiently, use the Picture Motion Browser function.

Easy Archive Solutions

DVDirect®



Compatible DVDirect devices*

- ▶ VRD-P1
- ▶ VRD-MC6

* Cannot burn AVCHD FX mode recorded files to DVD of AVCHD disc. Can burn FX mode to DVD Video downconverting HD to SD (VRD-MC6 doesn't support downconverting.)

Direct Copy



Direct Copy is compatible with USB 2.0 media that is formatted in the FAT32 file system. For storage up to 2TB, an AC powered external HDD is recommended. The camcorder must be connected to AC power, and connection via USB is not supported.

Picture Motion Browser



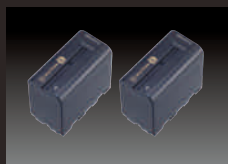
For importing pictures and movies into your VAIO® and organizing by image category. Correct/adjust brightness, contrast tone gradation, saturation, and sharpness with the photo-editing function and register shooting locations on an online map.

Specifications

HXR-MC2000U					
General			Camera Section		
Weight	(w/Hood, w/Eye Cup)	5 lb 15 oz (2.7 kg)	Imaging device	1/4-inch type Exmor R CMOS with ClearVid pixel array Pixel Gross: Approx. 4200K; Video Actual: Approx. 2650K (16:9)	
	(w/Hood, w/Eye Cup, w/ Battery, w/ Microphone, w/ Recording Media,)	6 lb 6 oz (2.9 kg)	Minimum illumination	3 lx (Low LUX mode, 1/25 shutter)	
Dimensions (W x H x D)	(w/Hood, w/Eye Cup)	10 1/8 x 9 1/4 x 18 inch (255 x 232 x 456 mm)	Shutter speed	1/6 - 1/10000 (Manual Shutter Speed Control)	
	(w/Hood, w/Eye Cup, w/ Battery, w/ Microphone, w/ Recording Media,)	10 1/8 x 9 1/4 x 18 3/8 inch (255 x 234 x 464 mm)	Iris	F1.8 - F3.4	
Power requirements	Power Requirements (AC adaptor / Battery)	8.4 V / 7.2 V	Slow & Quick Motion function	200 fps (fixed) as Smooth Slow Rec *The picture quality is degraded. (fps : Field per Sec.)	
Power consumption	viewfinder - normal brightness (HD / SD)	3.4 W / 2.6 W	White balance	Auto, outdoor (5800K), indoor (3200K), One-push (Touch panel)	
	LCD - normal brightness (HD / SD)	3.4 W / 2.6 W	Inputs/Outputs		
Operating temperature		+32 to +104 deg F (0 to +40 deg C)	Mic input	Stereo mini jack (x 1) ø3.5 mm	
Storage temperature		-4 to +140 deg F (-20 to +60 deg C)	A/V Output	Pin Jack	
Battery operating time	Continuous recording time	approx. 280 min (FH, LCD, NP-F570: fully charged batt.)	Component Video Output	Pin Jack	
Recording format	Video Format	HD	MPEG-4 AVC/H.264 (AVCHD)	Remote Connector	Stereo mini-minijack (ø2.5 mm)
		SD	MPEG-2 PS	USB	USB device, Mini-AB/HiSpeed (x 1)
	Audio Format	HD	Dolby Digital 2ch, 16 bit, 48 kHz	Headphone output	Stereo mini jack (x 1) ø3.5 mm
		SD	Dolby Digital 2ch, 16 bit, 48 kHz	HDMI output	HDMI connector (x 1)
Recording frame rate ¹		AVCHD FX (24 Mbps) 1920 x 1080/60i / 16:9 AVCHD FH (17 Mbps) 1920 x 1080/60i / 16:9 AVCHD HQ (9 Mbps) 1440 x 1080/60i / 16:9 AVCHD LP (5 Mbps) 1440 x 1080/60i / 16:9 For MPEG2 SD HQ (9 Mbps) 720 x 480/60i / 16:9, 4:3			
Recording/Playback time		175 min (2 h 55 m) with 32 GB Memory Stick PRO-HG Duo™ (24 MBps) Dolby® Digital 2ch recording			
Zoom ratio		Sony G Lens, 12x (optical), 160x Digital Zoom			
Focal length		f = 2.9 to 34.8 mm (equivalent to f = 29.8 to 357.6 mm at 16:9 video and still mode, f = 27.4 to 328.8 mm at 4:3 still mode, f = 36.5 to 438.0 mm at 4:3 video mode on 35 mm lens) ²			
Focus		Full range auto / Manual			
Image stabilizer		Active / Standard / OFF selectable			
Filter diameter		37 mm			
Monitoring			Microphone		
Viewfinder			0.2 inch-type approx. 201 600 dots (300 x 224 x 3 [RGB]), 4:3 aspect ratio		
Built-in LCD monitor			2.7 Clear Photo™ LCD, approx. 230 400 dots (960 x 240), 16:9 aspect ratio		
Recording Media			Supplied Accessories		
Internal Memory			64 GB		
Type			Memory Stick PRO Duo™ (Mark2), Memory Stick PRO-HG Duo ³ SD/SDHC/SDXC Memory Card ⁴		
			AC Adaptor [AC-L100], Rechargeable Battery Pack [NP-F570], Power cord, Microphone (Stereo) [ECM-PS1], Wind Screen, Eyecup, Lens hood, Lens cap, Composite cable (RCA x3), USB cable (mini-B), USB Adaptor cable (for external HDD) [VMC-UAM1], Application Software (CD-ROM) [PMB]		

- 1: Due to variable bitrate, 24 Mbps is the maximum bitrate for AVCHD FX mode and the average bitrate is being stated for FH, HQ and LP modes.
 2: The focal length is when SteadyShot mode is in Active mode Off.
 3: Compatible "Memory Stick" type: For AVCHD recording / Capacity: more than 1 GB, For Standard Definition recording / Capacity: more than 512 MB
 4: Recommended Speed Class For AVCHD recording / Class 4 or higher, For Standard Definition recording / Class 2 or higher

Optional Accessories



Rechargeable Battery Pack
2NP-F970



AC Adaptor/Charger
AC-VQLTB



Shotgun Microphone
ECM-CG50BP



LED Battery Video Light
HVL-LBPB



Camcorder Support
VCT-SP1PB



A LANC Remote Controller
with Variable Speed Zoom
RM-TBP

Approximate Recording Time

HD movie (w / 2ch Audio)					SD movie (w / 2ch Audio)			
HXR-MC2000U	AVC HD 24M (FX) (1920 x 1080i)	AVC HD 17M (FH) (1920 x 1080i)	AVC HD 9M (HQ)	AVC HD 5M (LP)	HXR-MC2000U	STD 9M (HQ)	Internal Memory (64GB) 2ch	
2 GB Memory Card	10 min	10 min	25 min	45 min	2 GB Memory Card	25 min	AVC HD 24M (FX) *8	Approx. 365 min
4 GB Memory Card	20 min	25 min	55 min	90 min	4 GB Memory Card	55 min	AVC HD 17M (FH)	Approx. 475 min
8 GB Memory Card	40 min	55 min	110 min	190 min	8 GB Memory Card	115 min	AVC HD 9M (HQ)	Approx. 950 min
16 GB Memory Card	85 min	110 min	220 min	380 min	16 GB Memory Card	230 min	AVC HD 5M (LP)	Approx. 1615 min
32 GB Memory Card	175 min	225 min	455 min	770 min	32 GB Memory Card	465 min	STD HQ	Approx. 975 min