



## Yellow Dog Enterprise Linux for the BCU-100

Yellow Dog Enterprise Linux (YDEL) is a complete, professional, CentOS / RPM-based Linux operating system for the Sony BCU-100. YDEL provides desktop workstation, server, and compute node functionality and includes the IBM Cell SDK and support for the on-board GPU.

Developed under contract with Sony, YDEL for the BCU-100 is provided by Terra Soft with enterprise level installation and technical support coupled with the per node license.

Key features include:

- A CentOS, RPM-based Linux OS.
- Enterprise support for the Sony BCU-100.
- IBM Cell SDK.
- Support for the on-board GPU.
- More than 2000 packages.

Yellow Dog Enterprise Linux combines a minimal-interaction graphical installer with support for a wide range of Power architecture hardware, including IBM QS2x and Mercury Cell blades, IBM System p servers, the Sony PlayStation 3, and former Apple PowerPC product line. This cross-system binary support grants BCU-100 users a great deal of flexibility through compatibility with other Power architecture compute nodes and workstations.

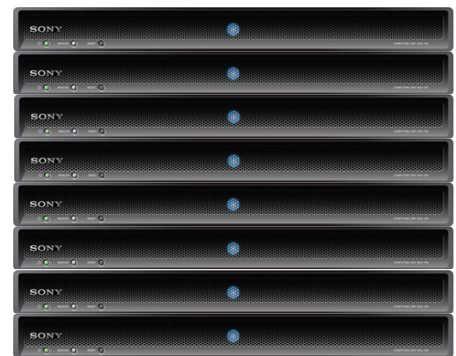
## BCU-100 HPC Clusters & VFX Render Farms

In conjunction with the Y-HPC Cluster Construction Suite from Terra Soft (see reverse side of this brochure), YDEL offers a complete end-to-end, server to compute node solution with technical and engineering support from the industry leader in Linux solutions for the Power architecture.

## Purchase & Contact Information

To learn more about Yellow Dog Enterprise Linux:  
[www.terrasoftsolutions.com/products/ydel/](http://www.terrasoftsolutions.com/products/ydel/)

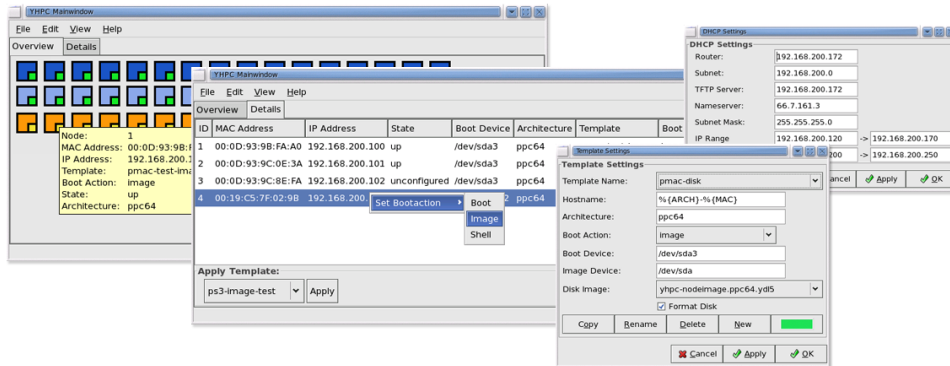
To purchase Yellow Dog Enterprise Linux for your BCU-100:  
[www.terrasoftsolutions.com/store/](http://www.terrasoftsolutions.com/store/)



Or contact Terra Soft at +1 (970) 278-9243 or [sales@terrasoftsolutions.com](mailto:sales@terrasoftsolutions.com) and be certain to mention the Sony BCU-100 and YDEL.

We look forward to working with you.

"Sony" is a registered trademark of Sony Corporation. "PlayStation" is a registered trademark of Sony Computer Entertainment Inc. "Yellow Dog Linux," "YDL," and "Y-HPC" are registered trademarks of Terra Soft Solutions. "Power" is a registered trademark of IBM. Linux is a registered trademark of Linus Torvalds.



**Cluster & Renderfarm Construction Suite for the BCU-100**

Y-HPC is a flexible, scalable vehicle for rapid construction of HPC clusters and VFX render farms.

As the success of any cluster is in part associated with the cost of ownership--rapid imaging, efficient maintenance, and up-time are invaluable.

Y-HPC supports this with:

- Rapid, image-based cluster construction.
- A simple, effective and intuitive interface.
- Support for the Sony BCU-100, Xserves, PlayStation 3's, and x86\_64.
- Support for Yellow Dog Enterprise Linux, CentOS.
- Support for TORQUE job queing.
- Use of Ganglia, xCPU, and the Y-HPC daemon to manage nodes.
- Designed to work with Cluster Resources' Moab for a cluster management.
- NFS, OpenMPI, IB, and PVFS2 tested with Yellow Dog Linux.

**Support for the BCU-100**

Y-HPC ships with a unique node image designed specifically for the Sony BCU-100.

**Y-HPC Saves Time**

Installing directly from DVD requires an hour or more per BCU-100. Y-HPC enables reformat and re-install in just 6-10 minutes, depending upon the size of the node image. Updates are simple with server-to-node migration.

**Y-HPC Keeps Things Organized**

Y-HPC enables system administrators to create, edit, manage, and archive node images -- self-contained, Linux operating system "snapshots" which are deployed to the compute nodes.

**Node Image Cluster Construction**

Node images may be copied, edited, deleted, and archived on the Y-HPC server and when deployed, given customized template 'personalities' which define the TCP/IP, boot method, and file system configuration.

Node images may reside locally on BCU-100 internal drive, or NFS boot from the server, or a combination of both.

BCU-100 compute nodes may be updated, downgraded, or completely rebuilt with new node images. In fact, any application that functions on a standard installation of Yellow Dog Enterprise Linux will function in a node image, enabling end-users to customize a master node image and then quickly, efficiently migrate that unique OS to every compute node in the cluster or render farm --without the hassle or waste of manual, individual installation from DVD.

**VFX Asset Management & Workflow Pipeline Software**

Terra Soft is proud to offer Y-Film, an asset management and workflow pipeline desktop to renderfarm solution for the VFX industry. If your studio requires an improved means of tracking the myriad of assets associated with modern VFX work, consider this powerful solution with support for Linux and OSX desktops and render farms.

**Purchase & Contact Information**

To learn more about Y-HPC:  
[www.terrasoftsolutions.com/products/y-hpc/](http://www.terrasoftsolutions.com/products/y-hpc/)

To learn more about Y-Film:  
[www.terrasoftsolutions.com/products/y-film/](http://www.terrasoftsolutions.com/products/y-film/)

To purchase Y-HPC or Y-Film for your BCU-100 cluster:  
[www.terrasoftsolutions.com/store/](http://www.terrasoftsolutions.com/store/)

Or contact Terra Soft at +1 (970) 278-9243 or [sales@terrasoftsolutions.com](mailto:sales@terrasoftsolutions.com) and be certain to mention the Sony BCU-100 and Y-HPC or Y-Film.

We look forward to working with you.